

Electrolytic Chlor-Alkali Membrane & Diaphragm Cell Accessories

Prince Rubber & Plastics Co., Inc. specializes in Rubber Covers and Gaskets, Seals, Rubber Hose Connectors, and Special Polymer Parts for the Chemical Industry.

Since 1931, we have experience with the chlor-alkali, chlorate, lithium hydroxide, and related electrochemical cell industries, worldwide.

This brochure summarizes Prince products for these industries.

Chlorate Cell Accessories



PRINCE
RUBBER & PLASTICS CO., INC



www.principr.com

- **Northern Headquarters:**
45 Hazelwood Drive · Buffalo, NY 14228 USA
+1 (716) 877-7400 · Fax +1 (716) 877-0743
- **Southern Division:**
11400 Richcroft Avenue · Baton Rouge, LA 70814 USA
+1 (225) 272-1653

Membrane Cell

“Panacea”® Gasket Systems

- “69” Series
- Armored Fluoroplastic Encapsulated “69” series

“Panacea”® Tubing or Sleeves

- “69” Series Special EPDM
- “51” Series Special Pure Gum Hose

Connector Hoses

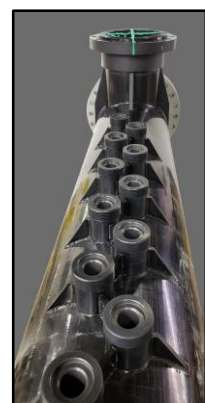
- Fluoroplastic Inlet/Outlet Hoses with Various Connecting Systems, and Hose Gaskets (Special EPDM).
- Hose Materials Include PTFE, FEP, PFA, and PVDF.

Pipe or Header Systems

- P-72 Styrene Co-Polymer Piping Systems for cell circuits of Hot, Wet Chlorine, Hydrogen, Sodium Hydroxide, Potassium Hydroxide, Ultra-Pure Brine
- DCPD Special Molded Parts
- Special P-72 Double Boss Headers

Fabricated Components

- Cell Frames, Gaskets, Piping Sections
- Capabilities in molded, extruded, machined, CNC router machined



Chlorate Accessories

“Panacea”® Cell Gasketing

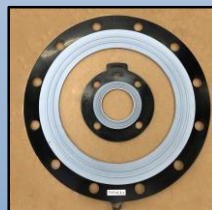
- 1475 TFE-P
- 6962 Special EPDM
- Fluoroplastic Encapsulated 6962 Special EPDM

“Panacea”® Pipe Gasketing

- 1475 TFE-P
- 6962 Special EPDM
- PT70-M PTFE-Protected Special EPDM

“Panacea”® Piping Systems

- P-72 for Chlorate Liquor and Hydrogen

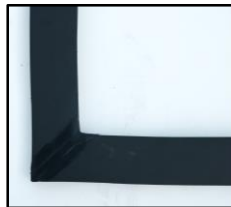


Diaphragm Cell

“Panacea”® Cell Gasketing and Grid Covers

Cell Top Seals, with Vulcanized Corners

- Sponge Rubber and Special Sponge Rubber Configurations
- Special EPDM Long-life, Easy-to-Seal Configurations

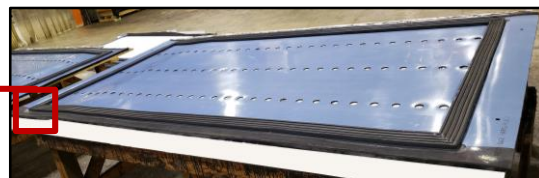


Cell Bottom Seals, with Vulcanized Corners

- Special EPDM Easy-to-Seal Configurations

Cell Grid Covers (Blankets)

- Mark I and Mark II Series: All-Rubber Compounds
- Mark III HB Extended-Life Fluoroplastic “Armored”



Sealing Aids

- Special Uncured EPDM Tapes and Sponge Cord

“Panacea”® Flexible Sleeve Connectors and Bellows

- “69” Series Special EPDM, for Hot, Wet Chlorine, Hydrogen, Brine, Caustic
- “51” Series Special Pure Gum Hose for Brine, Hydrogen
- Fluoroplastic Bellows, including PTFE and F230LP



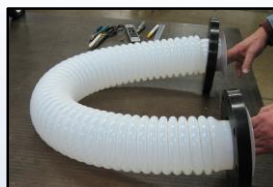
“Panacea”® Brine Tubing

- “69” Series Special EPDM
- “51” Series Special Pure Gum



Chlor Alkali Cell Circuit(s) Piping

- P-72 for Hot, Wet Chlorine, Hydrogen, Sodium Hydroxide, Potassium Hydroxide, Brine, Condensate
- Special Molded DCPD Sections
- Special Configuration Brine Flow Control Piping

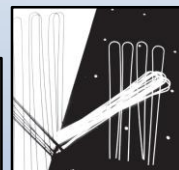


Chlorine and Hydrogen Cell Connector Pipes (Doglegs)

- Special P-72 and CPVC Thermoformed Sections for Chlorine and Hydrogen Cell-to-Header Piping, including Single-Piece Sections for added reliability

Caustic Funnels and Interrupter Assemblies

- DCPD Special Long-Life Molded Funnels and Interrupter Cups



Cell Heads – Molded DCPD

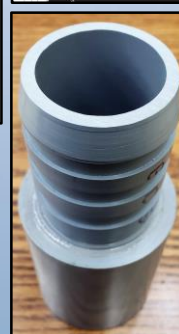


Anode Corner Guards

- HDPE, machined and thermoformed

Anode Spacers

- P-72, PVDF, and CPVC – Formed, Special Diameters



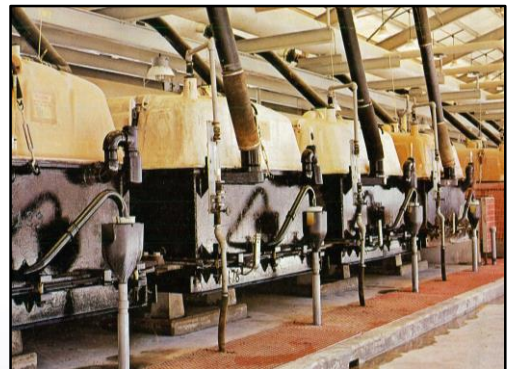
Stoppers and Bulkhead Fittings

- For Brine Feed Tube Connections, Sight Glass Connections and Other Applications

Chlor-Alkali Accessories

“Panacea”® Mark II Chlorine Transfer Hoses

- Ultra-Flexible, Light-Weight, Reliable, Corrosion-Resistant
- Manufactured and Thoroughly Tested per Chlorine Institute Pam. 6 Recommendations



Serving the Chemical Industry Worldwide | www.princerp.com

Northern Headquarters: 45 Hazelwood Drive · Buffalo, NY 14228 USA · +1 (716) 877-7400 · Fax +1 (716) 877-0743 · contact@princerp.com
Southern Division: 11400 Richcroft Avenue · Baton Rouge, LA 70814 USA · +1 (225) 272-1653