



## PANACEA® Mark II

### (Reinforced) Chlorine Transfer Hose

“Panacea”® Mark II Hose assemblies are specifically designed to transfer chlorine, bromine, sodium hydroxide, sulfur dioxide, sodium hypochlorite and other corrosive materials. The hoses are manufactured in accordance with Chlorine Institute Pamphlet 6 Piping Specifications.



- **Lightweight and ultra flexible** for user-friendly handling.
- **Competitively priced**
- **Self-draining**, low profile helical convolutions.
- Minimum pressure drop for faster load and unload times.
- Can be inspected safely.
- Optimal chemical resistance for longer service life.
- Moisture will not affect internal tube. Hose does not need to be cleaned and capped after every use.



#### Quality Control & Testing

- Each hose is material lot traceable.
- Each hose is subject to stringent QC procedures throughout the manufacturing process.
  - Certificate of Conformance is available for each hose, upon request.
- Each hose is permanently identified in accordance with Chlorine Institute specifications.
- Each hose is thoroughly cleaned before assembly. No oils, solvents or other contaminants are used in the assembly process.
- Each hose is pressure tested with nitrogen gas at 2 times the rated operating pressure while fully submerged under water.
- Each hose is dried and capped for shipment.
- A unique serial number is applied to each end of the hose for further traceability and is maintained in a permanent log of all hose assemblies.

#### Specifications

Hose Size I.D.		Max. Operating Burst Pressure		Min. Burst Pressure		Min. Bend Radius		Hose O.D.		Hose Weight	
in.	mm*	psig	barg	psig	barg	in.	mm*	in.	mm*	lb/ft	g/mm*
½	12.7	500	34.5	2500	172.4	1.5	38	1.025	26	.16	.24
1	38.1	375	25.9	1875	129.3	3	76	1.65	41.9	.41	.61

\*These hoses are not metrically sized. Metric dimensions are provided as a convenience only.

#### Weights of Hose Fittings, lbs/fitting

Hose Size	Monel Male NPT	Monel Retainer & 300# CS Flange
½	.27 (122 g)	2.0 (907 g)
1	.95 (431 g)	4.5 (2041 g)

Usable Temperature Range: -40°F to +122°F (-40°C to +50°C)

Serving the Chemical Industry Worldwide | [www.princep.com](http://www.princep.com)



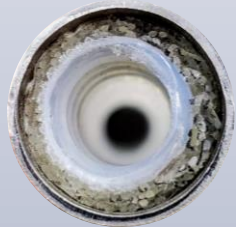
Two high-tensile-strength PVDF braids provide high pressure rating

Internal Monel<sup>1</sup> crimp ferrule locks the fitting to the 2 PVDF braid reinforcements and PTFE tube

Wide hex flats for easy wrenching  
\*Hose labeling is also available on the hexes

Schedule 80 Monel<sup>1</sup> R405 male NPT or Schedule 80 stub end available

Hose Cross-Sectional View



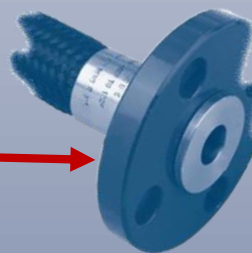
One-piece extruded tube with no seams or voids that can lead to premature failure

Thick, helically-convoluted PTFE tube with self-draining design

Thick strand (denier) chafe-resistant PVDF abrasion cover

Hose labeling options described below

Carbon steel ANSI B16.5 300# flanges are lap joint style with epoxy coating for better corrosion resistance (Other flange materials are available.)

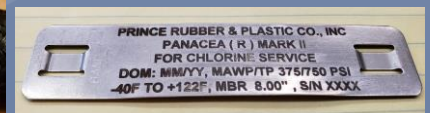


Schedule 80 Monel<sup>1</sup> R405 male NPT or Schedule 80 stub end available

## Labeling

Stainless Steel crimp ring secures PVDF abrasion cover and contains permanent stamp of:

- "Panacea"® Mark II<sup>2</sup>
- For Chlorine Service
- Date of Manufacture
- Maximum Allowable Working Pressure
- Usable Temperature Range
- Minimum Bend Radius
- Test Pressure
- **Alternate Monel<sup>1</sup> Crimp Ring**, loosely-fitting, is also available with this labeling, extending legibility life of labels



<sup>1</sup> Monel is a registered trademark of Huntington Alloys, Inc.

<sup>2</sup> "Panacea"® is a registered trademark of Prince Rubber & Plastics Co., Inc.